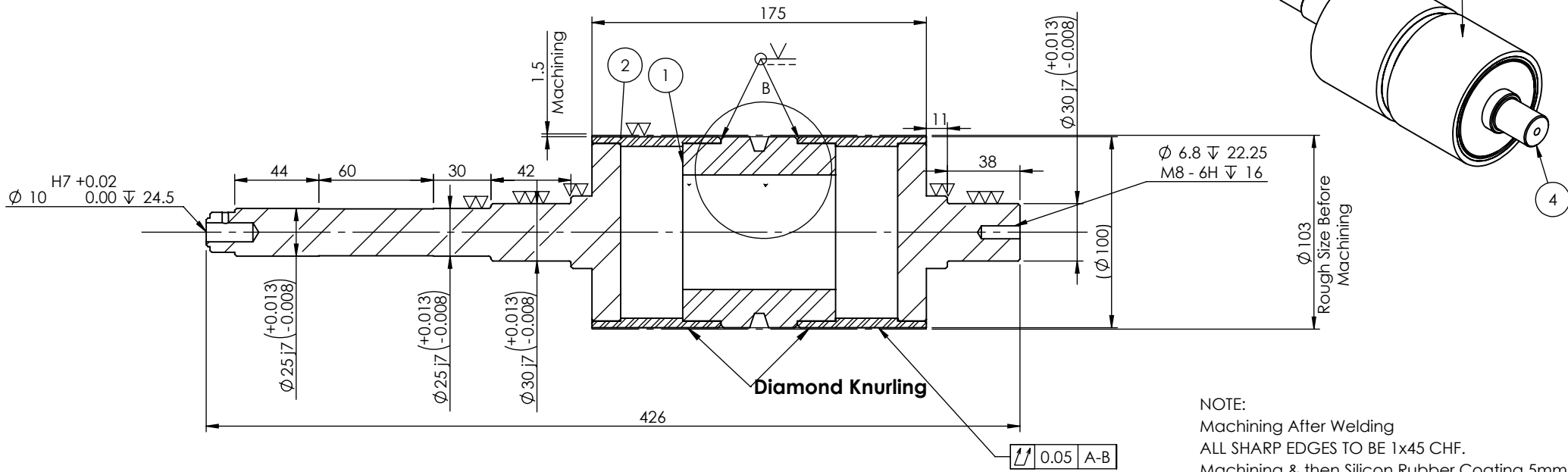
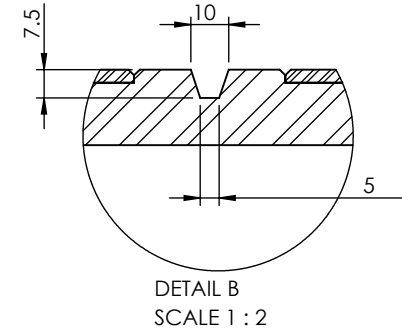
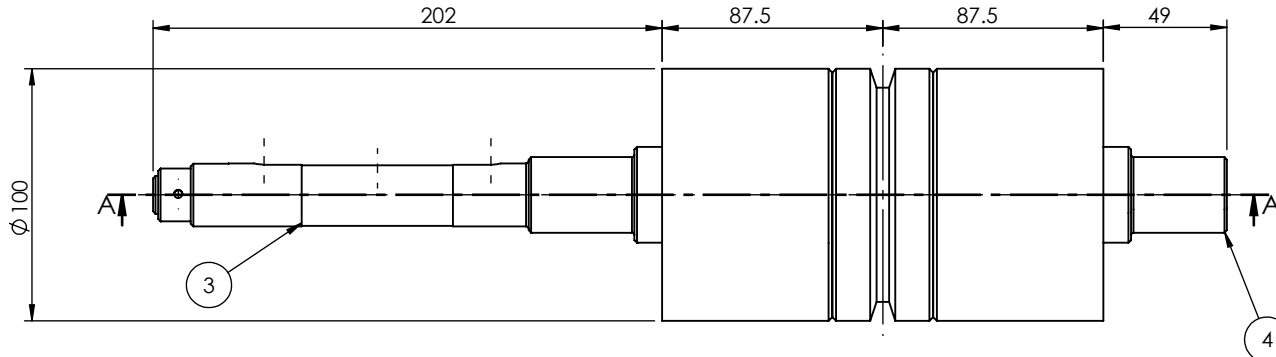


ITEM NO.	PartNo	Description	QTY.
1	16614-2345-1	V Groove Roller Insert	1
2	16614-2346-2	Roller	2
3	16614-2348-3	Gear Box Insert Shaft	1
4	16614-2347-4	Bearing Locator	1

SURFACE FINISH	
As Machined	
Acid	
Glass Bead	
Orbital Sand	
Powder Coat	
Zinc Plate	
Anodise	
Polished	
Scotch Brite	
DeBurr	
ENP	
Blackodise	



NOTE:
Machining After Welding
ALL SHARP EDGES TO BE 1x45 CHF.
Machining & then Silicon Rubber Coating 5mm

SECTION A-A
SCALE 1 : 3

MATERIAL:		Created From:	
APPROX. FINISHED WT. (K.g.): 7343.12		DRAWING No. 16614-2319	
COMPONENT COLOUR:		PRINTED: 17-09-2024	
REV BY DATE		DESIGN: RV	
MODIFICATIONS		DRAWN: As Above	
		SHEET 1/6	



Bector Automation
RMI India Pvt. Ltd.
Plot No. 24, Gat. No. 613/1,
Kuruli, Tal. - Khed
Dist. Pune 410501
Maharashtra, India

COPYRIGHT
© 2024 B.A.R. India Pvt. Ltd.
THIS DRAWING MAY NOT BE
REPRODUCED OR TRANSMITTED
WITHOUT PRIOR PERMISSION

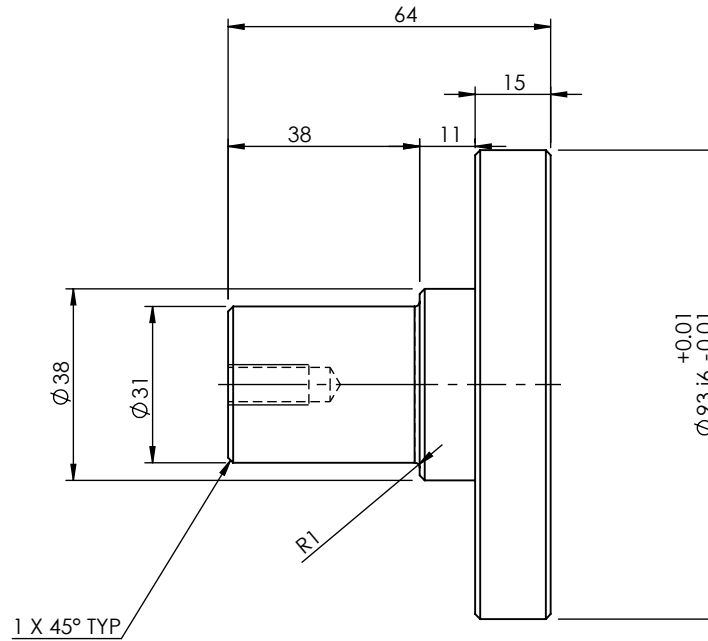
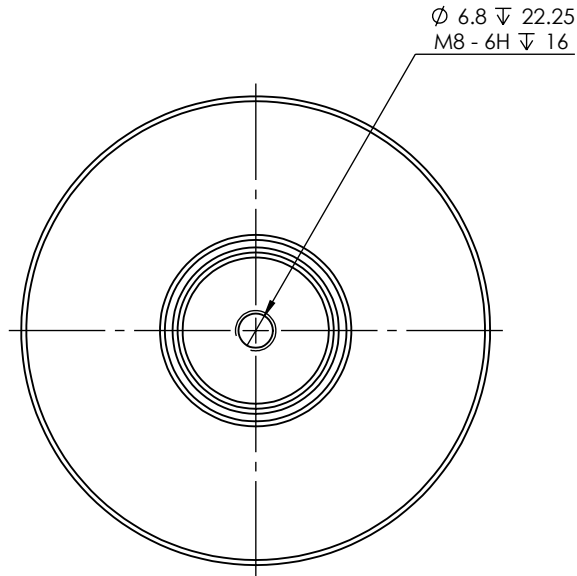
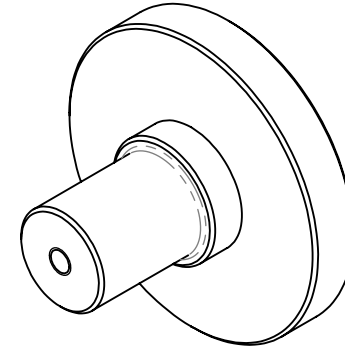
TOLERANCES

NO DECIMAL PLACE	=0	+0.2 -0.2
ONE DECIMAL PLACE	=0.0	+0.1 -0.1
FABRICATION	=0	+1.0 -1.0

ALL DIMENSIONS ARE IN MILLIMETERS

16614-Robotic cartoner
INFEED CONVEYOR
Drive Roller

SURFACE FINISH	
As Machined	
Acid	
Glass Bead	
Orbital Sand	
Powder Coat	
Zinc Plate	
Anodise	
Polished	
Scotch Brite	
DeBurr	
ENP	
Blackodise	



MATERIAL: EN19 / 4140		Created From:	
APPROX. FINISHED WT. (K.g.): 1106.95		COMPONENT COLOUR:	
		DRAWING No.	
		16614-2347	
		PRINTED: 17-09-2024	
		DESIGN: RV	
		DRAWN: As Above	
REV	BY	DATE	MODIFICATIONS



**Bector Automation
RML India Pvt. Ltd.**
Plot No. 24, Gat. No. 613/1,
Kuruli, Tal. - Khed
Dist. Pune 410501
Maharashtra, India

COPYRIGHT
© 2024 B.A.R. India Pvt. LTD.
THIS DRAWING MAY NOT BE
REPRODUCED OR TRANSMITTED
WITHOUT PRIOR PERMISSION

TOLERANCES

NO DECIMAL PLACE	=0	+0.2 -0.2
ONE DECIMAL PLACE	=0.0	+0.1 -0.1
FABRICATION	=0	+1.0 -1.0

ALL DIMENSIONS ARE IN MILLIMETERS

16614-ROBOTIC CARTONER
Infeed Conveyor
Bearing Locator

SHEET
5/6

